

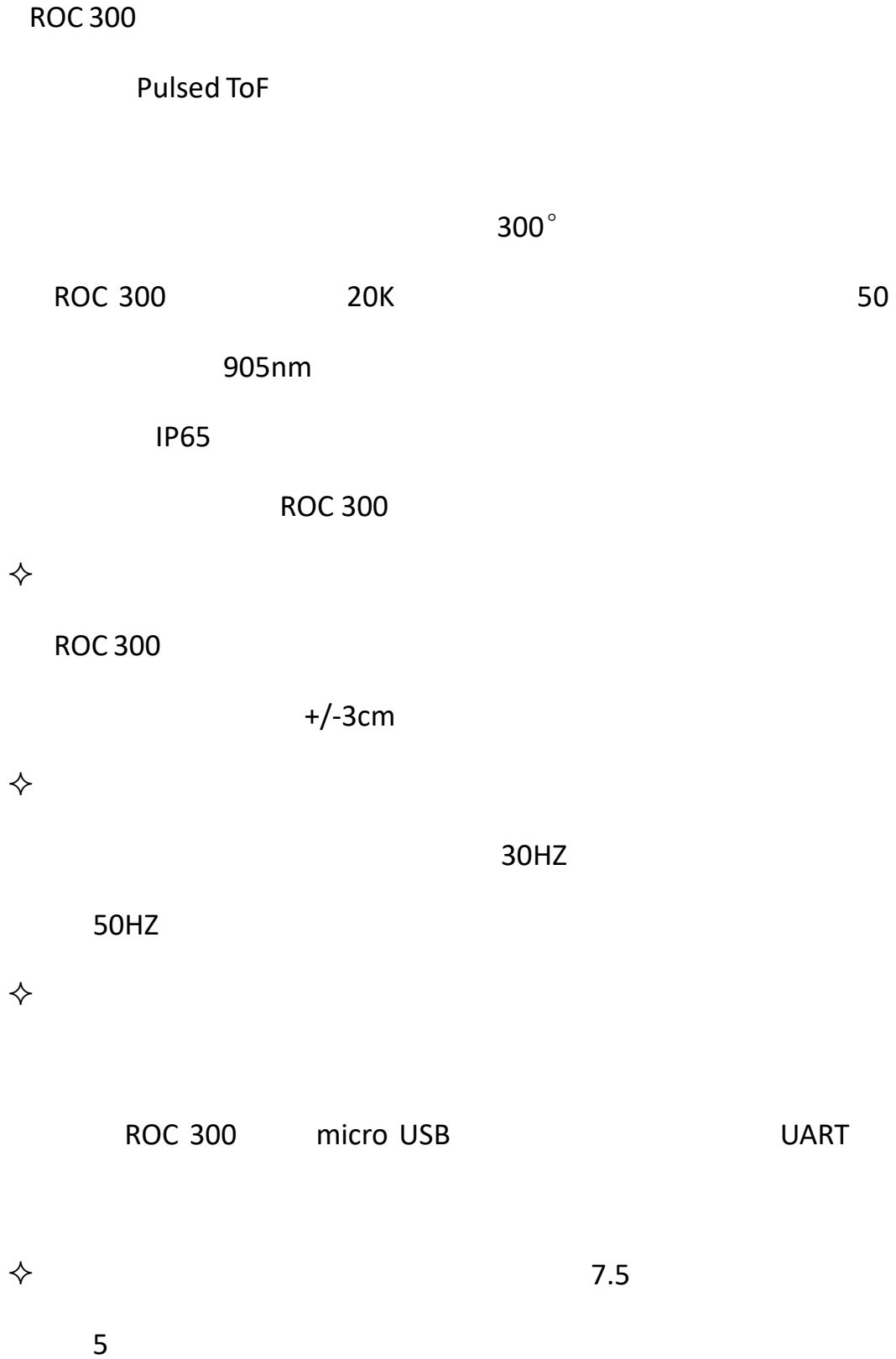


# ROC 300



1.	.....	2
2.	.....	3
3.	.....	4
3.1	.....	4
3.2	.....	4
3.3	.....	5
4.	.....	6
4.1	.....	6
4.2	.....	6
4.3	.....	7
5.	.....	9
A	.....	10

# 1.



## 2.

- ◇ 905nm class I
- ◇ 0.1m 15~50m
- ◇ +/-3cm
- ◇ 300°
- ◇ 20KHZ
- ◇ 10HZ~30HZ
- ◇ 0.18 10HZ ~0.54 30HZ
- ◇ >80000LX
- ◇ 5V/500mA
- ◇ <2.5w
- ◇ 50mm \* 50mm \* 75mm
- ◇ 150g
- ◇ IP65
- ◇ micro-USB
- ◇ -10 ~55
- ◇ -30 ~75

1

	ROC 300A	ROC 300B	ROC 300C	ROC 300E	ROC 300F
	15m	25m	35m	45m	55m

### 3.

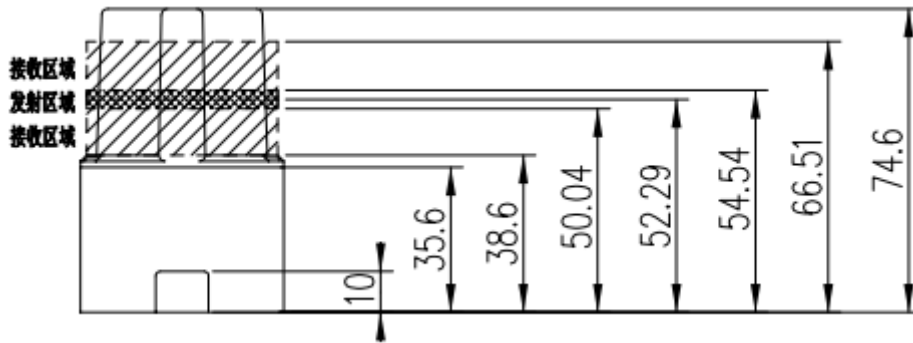
#### 3.1

ROC 300

1

1

5

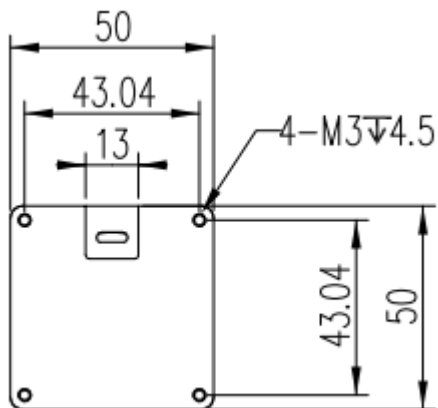


1

#### 3.2

ROC300

2



### 3.3

ROC 300	micro USB		
	micro USB	90	micro USB
		UART	RS232/485
PLC	IO		

## 4.

### 4.1

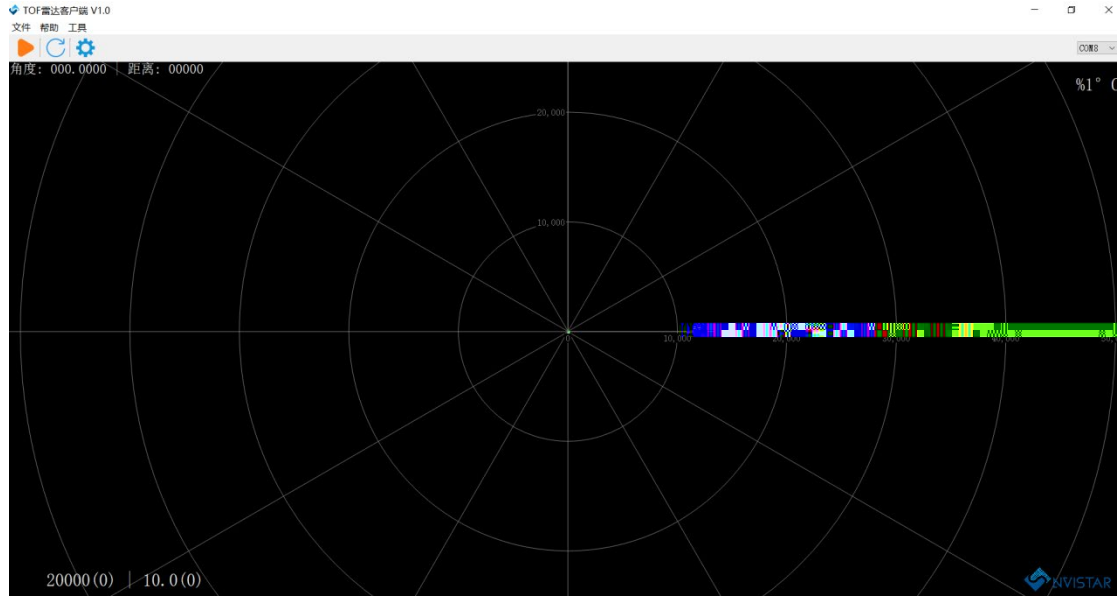
#### USB



<http://www.nvistar.com/?jishuzhichi/xiazaizhongxin/>

### 4.2

lidarviewer.exe



### 参数配置

Parameter configuration panel with the following settings:

- 采样率: 20000
- 转速: 1000
- 拖尾强度: 6
- 信号质量:  打开信号质量

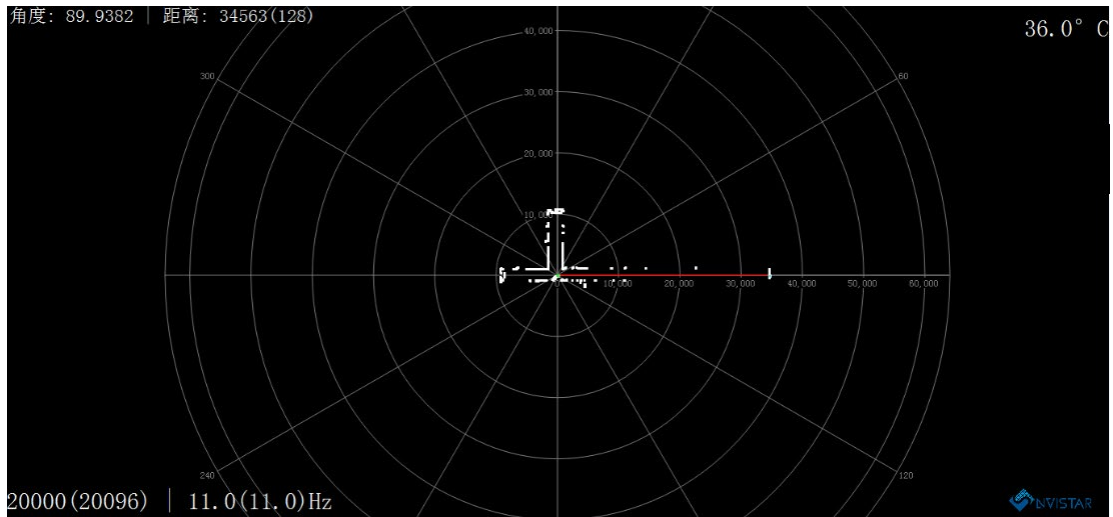
Navigation icons: back (left arrow) and save (floppy disk).

## 4.3





ROC 300



20000(20096)

20K

20.096K.

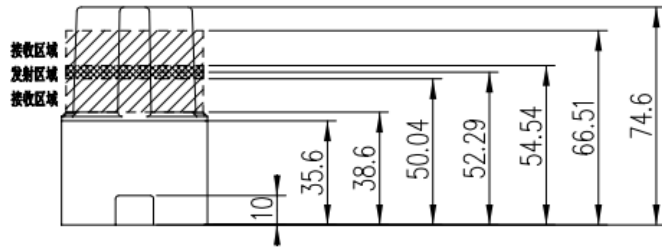
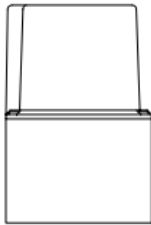
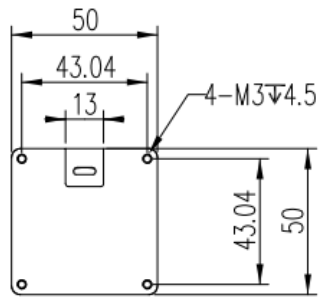
11.0(11.0)

11Hz

11Hz.

TOF雷达客户端 V1.1.1 =====>雷达名称:ROC 300 软件版本:V1.12 硬件版本:V2.0 序列号:0000000000000000

5.



**A**

<b>2022-12-26</b>	<b>1.0</b>	